



Evaluating the Accountable Communities of Health Initiative

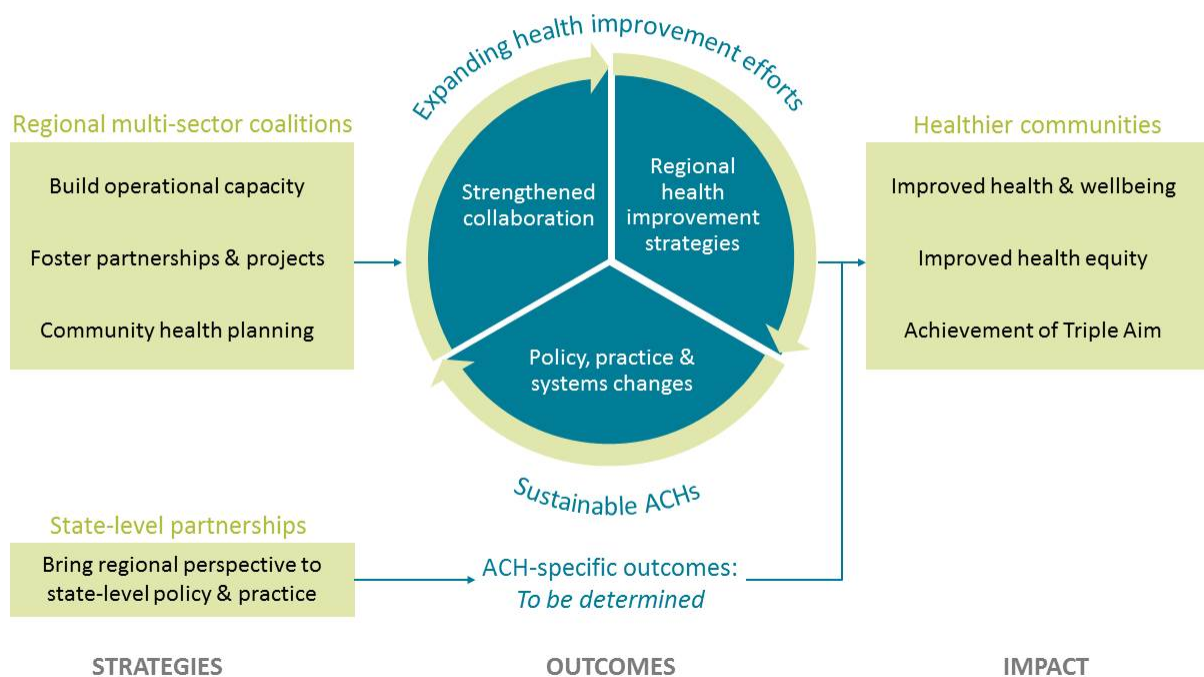
Center for Community Health and Evaluation

An Accountable Community of Health (ACH) is a group of people in a given geographic area representing entities from a variety of different sectors with a common interest in improving health. With support from the state, nine ACHs have formally organized across Washington for the purpose of coordinating activities, jointly implementing new health related projects, and advising state agencies on how to best address health needs within their geographic area.

The Health Care Authority (HCA) has contracted with the Center for Community Health and Evaluation (CCHE) to evaluate the ACH initiative. CCHE aims to understand how ACHs come together, agree on community health priorities, engage in health improvement activities, contribute to the Healthier Washington initiative, and work towards becoming sustainable coalitions.

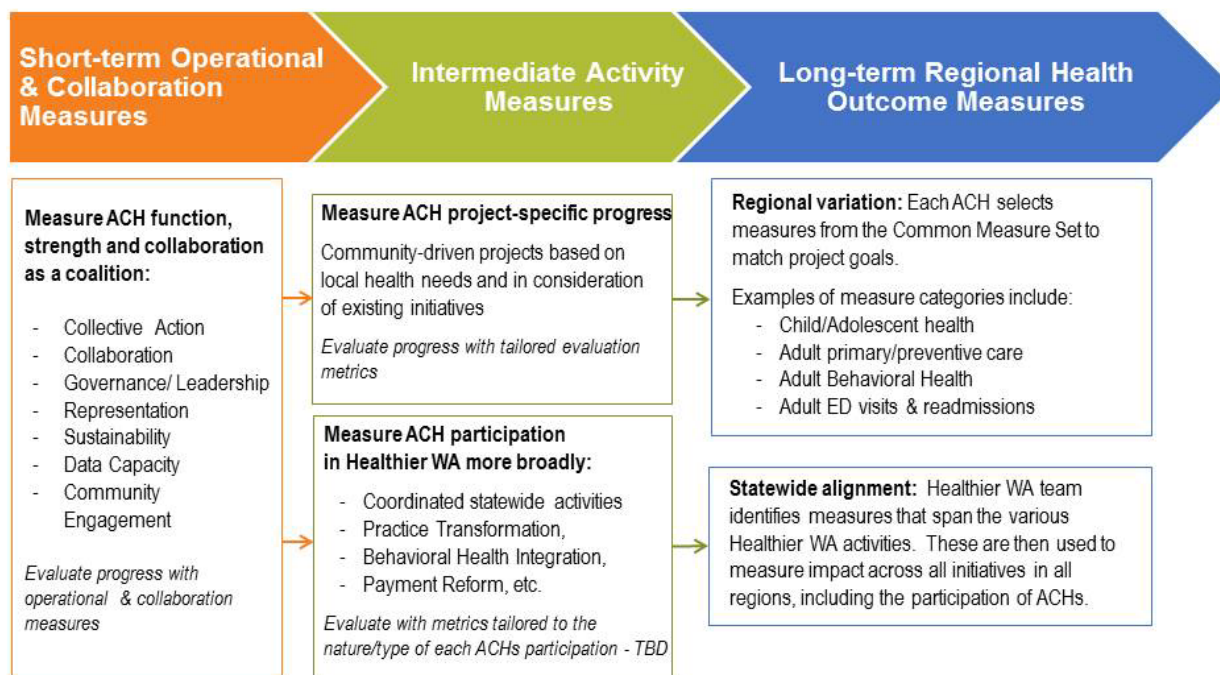
Strategic Learning. As an evaluation partner, CCHE provides timely feedback from multiple data sources to Healthier Washington and HCA staff about success factors, challenges, and lessons learned to inform strategic learning about the development of ACHs role in Healthier Washington and in their regions. As a first step in this process, CCHE worked with HCA and the ACHs to develop an ACH “theory of change”, or model for how Healthier Washington envisions the ACHs will achieve their impact.

Accountable Communities of Health | Theory of Change



Measuring outcomes. CCHE will also assess the ACH initiative’s impact at the end of the project through the lens of the ACH Initiative Theory of Change. Throughout the initiative, CCHE’s measurement framework (below) aims to examine a range of ACH outcomes:

- Short-term operational measures about the strength and functioning of the ACH as a coalition
- Intermediate activity measures about ACH project work and Healthier Washington activities
- Long-term regional health measures about project impact on regional health indicators and statewide health improvement priorities



Collecting data. Data is being collected from multiple sources to understand ACH capacity and progress.

- Site visits to all nine ACH regions to see ACH’s in action
- Interviews with backbone staff and ACH members to understand ACH development, regional ACH activities, and their participation in state-level Healthier Washington activities
- Surveys of ACH members to gather members’ perceptions of their ACH
- Observation of meetings where ACH members are convened to discuss the statewide initiative
- Review of grant applications, designation proposals, and reports submitted by ACHs to HCA

CCHE’s evaluation approach

When your goal is to improve community health, you have questions about what works. At the Center for Community Health and Evaluation (CCHE) we take a collaborative approach to help find the answers. We partner with coalitions, health departments, and many other organizations, on evaluation planning, data collection, analysis, and reporting. Our approach emphasizes sharing data and evaluation findings with our clients when it is most helpful for their activities and decision-making.